



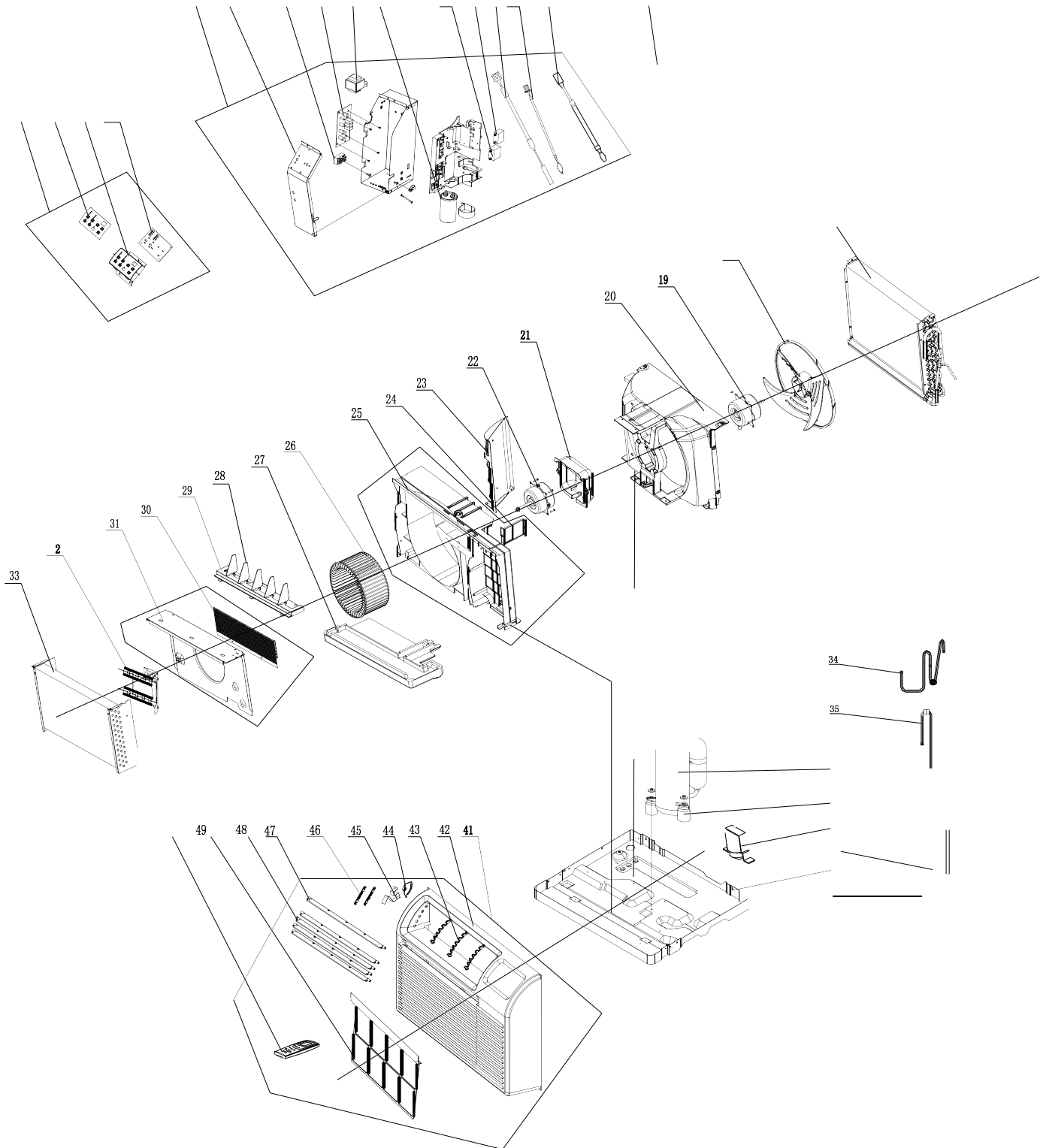
PARTS LIST

Room Air Conditioner

PTTE12B-1



EXPLODED VIEW



REPLACEMENT PARTS

Location	Part Name	Quantity	Part No.
1	LCD Cover Sub-assy	1	209044060008_X30266
2	Membrane	1	63029901724
3	LCD Cover	1	2012103301
4	Display Board	1	300001060112
5	Electric Box Assy	1	100002061524_X30266
6	Electric Box Cover	1	01411405
7	Terminal Board	2	42011103
8	Main Board	1	300002000833
9	Transformer	1	450002000010
10	Capacitor CBB65	1	3300008101
11	Capacitor CBB61	1	3301074710
12	Capacitor CBB61S	1	3301074701
13	Temperature Sensor	1	390000372
14	Temperature Sensor	1	390001978G
15	Temperature Sensor	1	390000598
16	Pwer cord (LCDI)	1	4002036353
17	Condenser Assy	1	011002000736
18	Axial Flow Fan	1	10331008
19	Fan Motor	1	1501104710
20	Diversio Circle	1	200150000001
21	Baffle Plate	1	200012000015
22	Fan Motor	1	150110335
23	Baffle Plate	1	200012000010
24	Baffle Plate	1	26112905
25	Propeller housing Assy	1	209027000004
26	Centrifugal Fan	1	10312903
27	Water Tray	0	none
28	Air Louver	5	10512907
29	Swing Louver Clamp	1	24211045
30	Rear Grill	1	01451001
31	Front Clapboard Assy	1	01231100
32	Electric Heat Groupware	1	32001011
33	Evaporator Assy	1	01100100159
34	Inhalation Tube	1	035006000401
35	Discharge Tube Sub-assy	1	030013000243
36	Compressor and Fittings	1	00101443
37	Compressor Gasket	3	00901200014
38	Drainage Valve	1	07101001
39	Capillary Sub-assy	1	03000600217
40	Chassis Sub-assy	1	017000000326P
41	Front Panel Assy	1	00800600001_X30266
42	Front Panel	1	27230010744
43	Guide Louver Support	3	2421290601
44	Ratchet Wheel	1	24232901
45	Click Spring	1	73022901
46	Linkage of Guide Louver	2	1058290403
47	Guide Louver 2	4	1051290901
48	Guide Louver 1	1	1051290801
49	Filter Sub-Assy	1	1112103002
50	Remote Controller	1	30510092_X30266

Due to ongoing product improvements, specifications and dimensions are subject to change and correction without notice or incurring obligations. Determining the application and suitability for use of any product is the responsibility of the installer. Additionally, the installer is responsible for verifying dimensional data on the actual product prior to beginning any installation preparations.

Incentive and rebate programs have precise requirements as to product performance and certification. All products meet applicable regulations in effect on date of manufacture; however, certifications are not necessarily granted for the life of a product. Therefore, it is the responsibility of the applicant to determine whether a specific model qualifies for these incentive/rebate programs.

Comfort-Aire[®]

1900 Wellworth Ave., Jackson, MI 49203 • Ph. 517-787-2100 • www.marsdelivers.com

